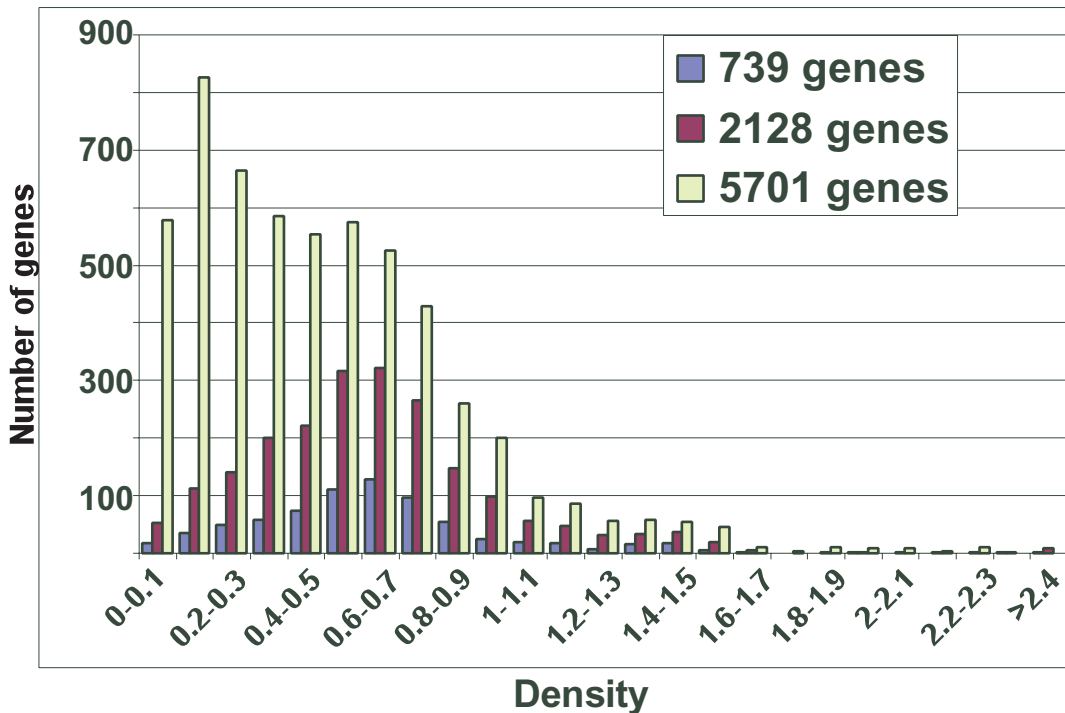


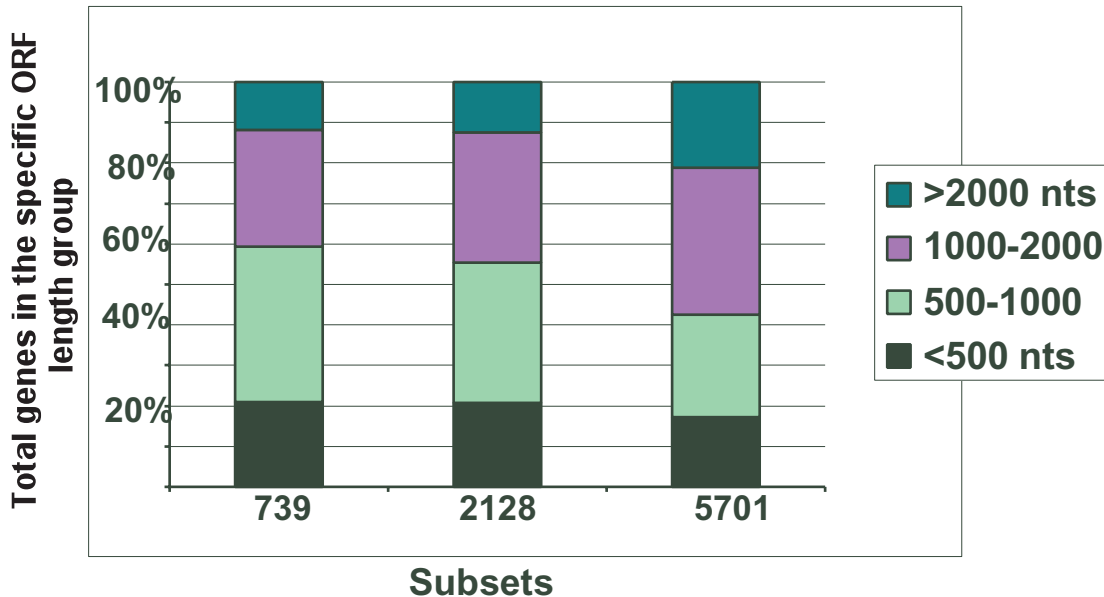
Supplemental Figure 5

A). Distribution of ribosome densities for the data subsets



The number of genes in each density bin (expressed as ribosomes/100 nts) is presented for each data subset. Note the small number of genes with densities higher than 1.5.

B). ORF length distribution for the data subset



Breakdown of the different subsets according to ORF length.

There are more mRNAs of lower ribosome density in the largest data set (5701 genes) and this data set also has a larger fraction of longer mRNAs. The longer mRNA tend to have lower abundances (see Protocols for our estimates of mRNA copies per cell). This presumably contributes to the lower data precision and their exclusion from the higher quality subsets.